

KEY PERFORMANCE FEATURES

- Variety of Frequency Ranges Available
- Low Passband Insertion Loss $\leq 1.5 - 4.5$ dB typ
- High Skirt Selectivity $\geq 45 - 60$ dB typ
- Compact Packaging Options
- EAR 99 Export Classification



PRODUCT DESCRIPTION

AKON has developed a new line of Narrow Band Multiplexer Filters covering a variety of Bands over the 1 to 18 GHz frequency range. AKON offers a standard line of 2, 3, 4 and 5 channel filters, but also can provide custom design for specific customer requirements. These filters come in Drop-In and SMP packaging options to fit the specific applications of your system.

AKON's design techniques and construction provides superior electrical performance with regard to passband insertion loss, high skirt selectivity and predictable temperature performance.

AKON products are designed to withstand the demanding environments of Civilian, Military, and Space applications. Our compact and ruggedized products are designed to handle stringent mechanical shock/vibrations, temperature cycling, altitude and temperature extremes.

Reliability is a key feature of AKON products and to ensure this we perform ESS testing on all of our products. AKON offers an off-the-shelf screening option called its "H" series, per MIL-STD-883 level B that is available on all of its RF & Microwave Components. **For custom electrical, mechanical, and screening options, please contact AKON Sales: sales@akoninc.com (or) 408-432-8039.**

SPECIFICATIONS:

Model Number	Passband (GHz)	Insertion Loss (max) (dB)	Lower Stopband (min) (dBc)	Upper Stopband (min) (dBc)	VSWR (max)	Size L x W x H (inch)	Package
A65-MH660	3.2 - 5.8	1.5	40 \leq 2 GHz	40 \geq 6.4 GHz	1.8:1	Figure 1 & 2	D, S
	8.65 - 14.3	1.5	50 \leq 5.8 GHz	45 \geq 17.4 GHz	1.8:1		D, S
A65-MH661	5.15 - 9.3	1.5	40 \leq 12.0 GHz	50 \geq 10.4 GHz	1.6:1	Figure 3 & 4	D, S
	13.7 - 18.0	1.5	25 \leq 18.7 GHz	25 \geq 18.7 GHz	1.6:1		D, S
A65-MH670	10.75 - 11.25	2.7	60 \leq 10.0 GHz	60 \geq 12.0 GHz	1.6:1	Figure 5 & 6	D, S
	13.75 - 13.25	2.7	60 \leq 13.0 GHz	60 \geq 15.0 GHz	1.6:1		D, S
	15.75 - 16.25	2.7	60 \leq 15.0 GHz	60 \geq 17.0 GHz	1.6:1		D, S

AKON, Inc. and its affiliates reserve the right to make changes to the product(s) or information contained herein without notice.

All products are measured in 50-ohm system, over a temperature Range of -54° to +85° C.

Note: Packaging Options: D = Drop-In, S = SMP (Model Number Example: A65-MH6XXD)

Note: All dimensions are specified in inches (mm)

SPECIFICATIONS CON'T:

Model Number	Passband (GHz)	Insertion Loss (max) (dB)	Lower Stopband (min) (dBc)	Upper Stopband (min) (dBc)	VSWR (max)	Size L x W x H (inch)	Package
A65-MH680	4.27 - 4.33	4.0	60 ≤ 4.2 GHz	60 ≥ 4.4 GHz	1.6:1	Figure 7 & 8	D, S
	4.77 - 4.83	4.0	60 ≤ 4.7 GHz	60 ≥ 4.9 GHz	1.6:1		D, S
	5.27 - 5.33	4.0	60 ≤ 5.2 GHz	60 ≥ 5.4 GHz	1.6:1		D, S
	5.77 - 5.83	4.0	60 ≤ 5.7 GHz	60 ≥ 5.9 GHz	1.6:1		D, S
A65-MH681	3.97 - 4.03	4.5	60 ≤ 3.9 GHz	60 ≥ 4.1 GHz	1.6:1	Figure 9 & 10	D, S
	4.47 - 4.53	4.5	60 ≤ 4.4 GHz	60 ≥ 4.6 GHz	1.6:1		D, S
	5.07 - 5.13	4.5	60 ≤ 4.9 GHz	60 ≥ 5.1 GHz	1.6:1		D, S
	5.47 - 5.53	4.5	60 ≤ 5.4 GHz	60 ≥ 5.6 GHz	1.6:1		D, S
	5.97 - 6.03	4.5	60 ≤ 5.9 GHz	60 ≥ 6.1 GHz	1.6:1		D, S

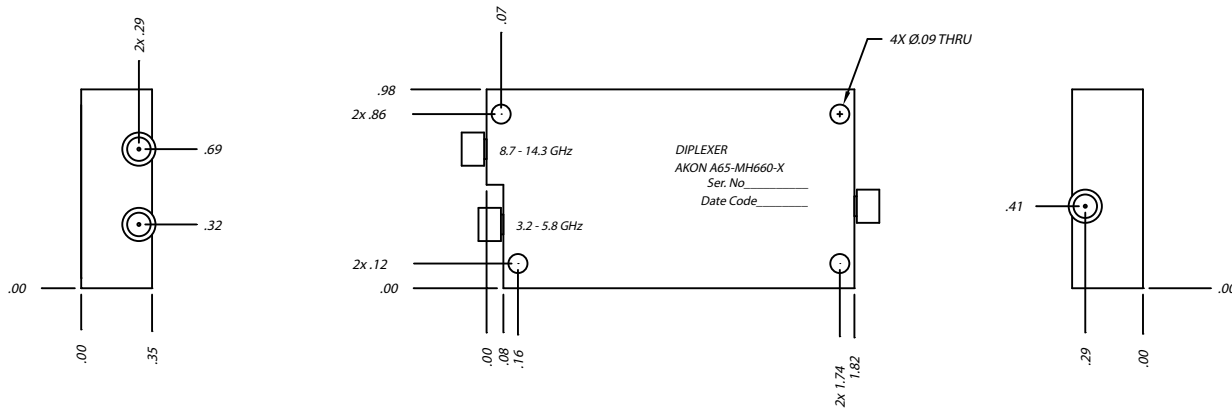
AKON, Inc. and it's affiliates reserve the right to make changes to the product(s) or information contained herein without notice.

All products are measured in 50-ohm system, over a temperature Range of -54° to +85° C.

Note: Packaging Options: D = Drop-In, S = SMP (Model Number Example: A65-MH6XXD)

Note: All dimensions are specified in inches (mm)

FIGURE 1



SUFFIX	DESIGNATION CONNECTOR CHOICE
D	DROP-IN
S	SMP

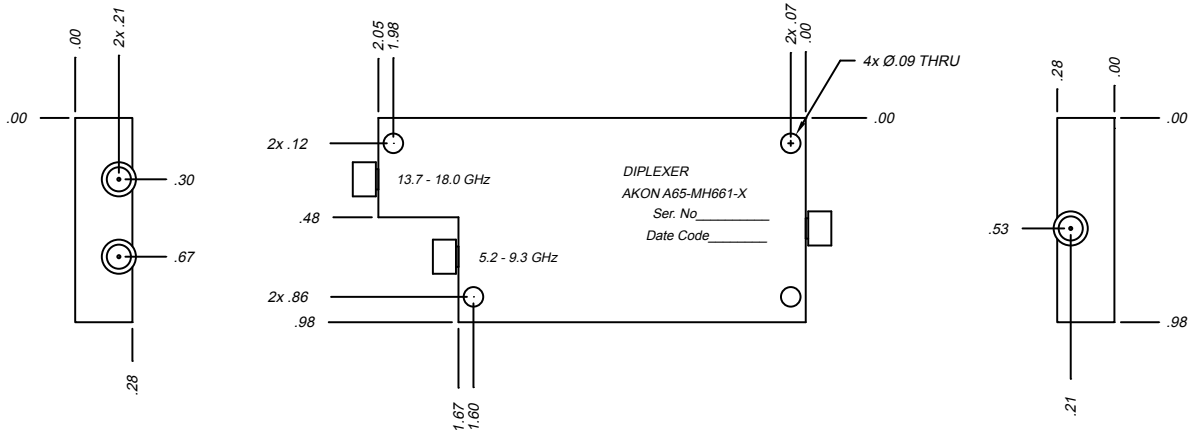
FIGURE 2

Outline drawing available upon request

DROP-IN

FIGURE 3

SMP



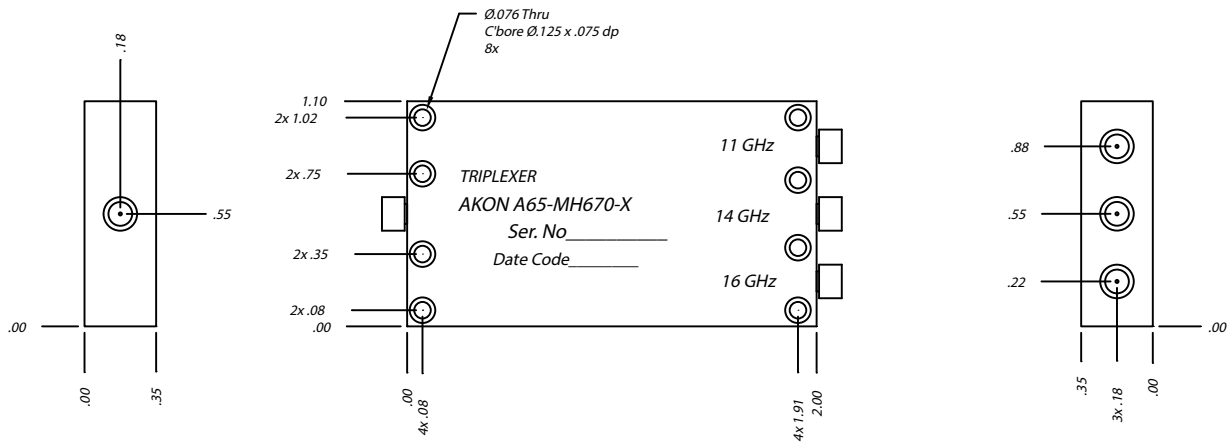
SUFFIX	DESIGNATION CONNECTOR CHOICE
D	DROP-IN
S	SMP

FIGURE 4

Outline drawing available upon request

DROP-IN

FIGURE 5



SUFFIX	DESIGNATION CONNECTOR CHOICE
D	DROP-IN
S	SMP

FIGURE 6

Outline drawing available upon request

DROP-IN

FIGURE 7

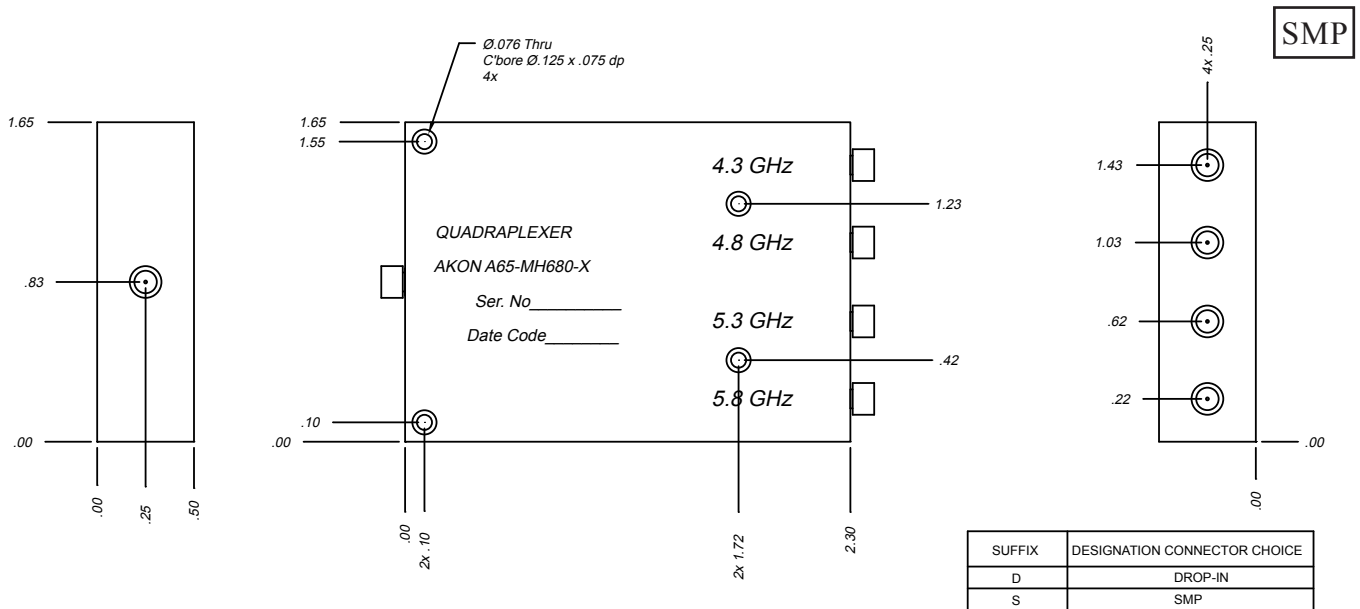


FIGURE 8

Outline drawing available upon request

DROP-IN

FIGURE 9

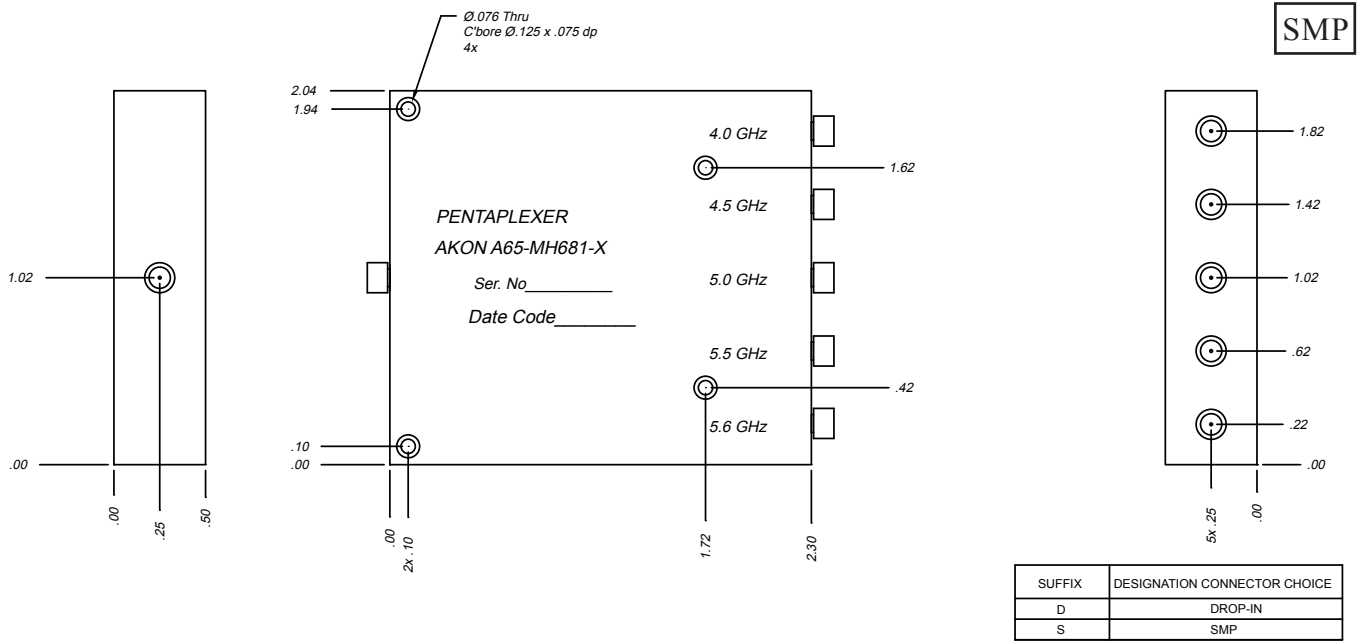


FIGURE 10

Outline drawing available upon request

DROP-IN

TYPICAL PERFORMANCE DATA

